



## Overview of technical equipment

### Studentenes Hus Gjøvik

Updated Mai 6th 2015 by Øyvind Aasen (technical manager, +47920 146 47, teknisk.huset@hig.no)

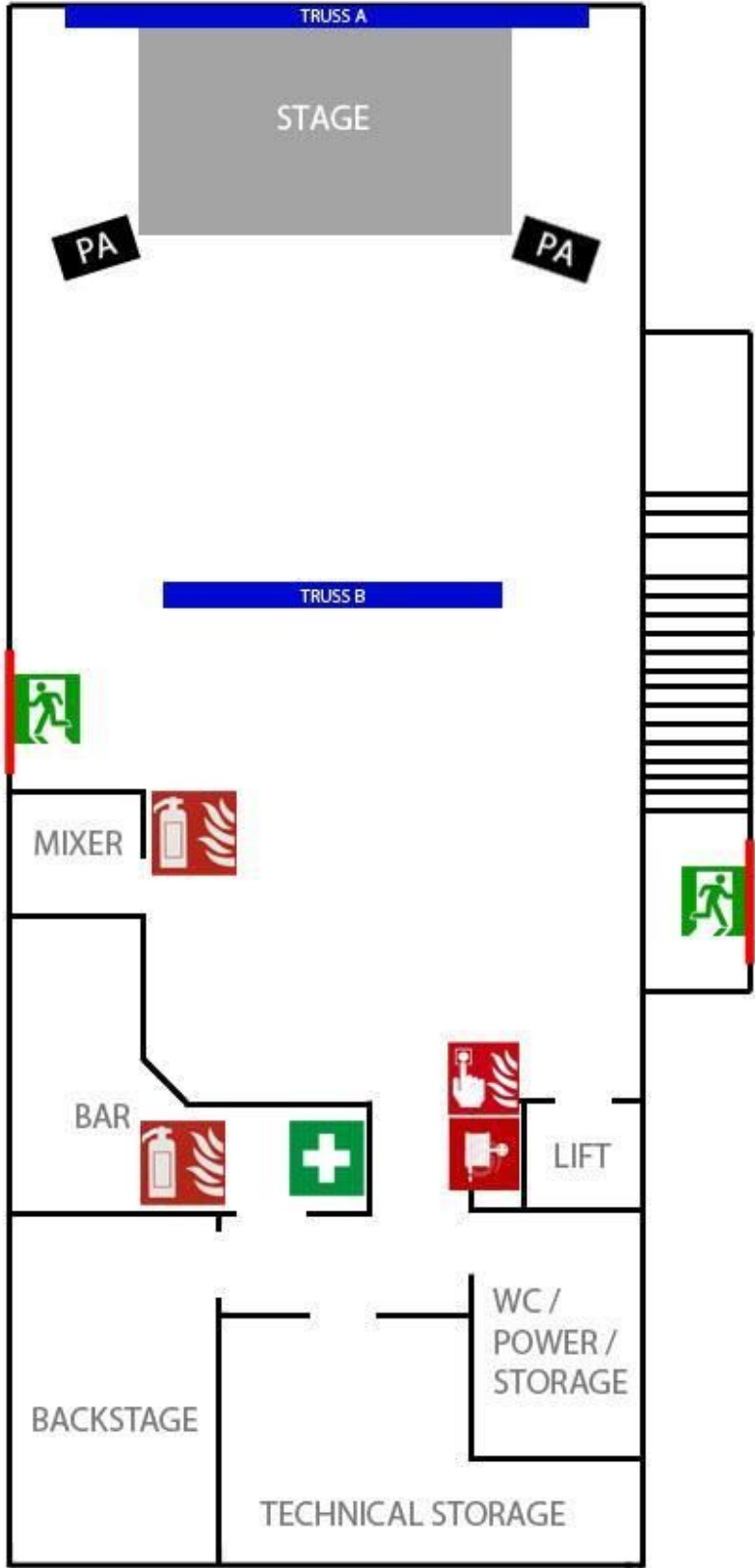
PA	<p>Is a three-way system by Nexo</p> <ul style="list-style-type: none"><li>4x Nexo RS 18</li><li>6x Nexo GEO S 1230</li><li>2x Nexo NXAMP4X4</li><li>1x Ashley GQX 3102 Main Equalizer</li></ul>
Lights	<p>12x PAR64 1000W in 6 pairs with holders for color filters (DMX ch 1-7, Truss A)</p> <p>4x PAR64 1000W in 2 pairs with holders for color filters (DMX ch 10-11, Truss B)</p> <p>-Artists/engineers are encouraged to bring their own color filters!</p> <p>2x 500W halogen worklights as crowd blinders (DMX ch 12)</p> <p>2x 6ch Paradime DMX digital dimmers (DMX ch 1-12), 10A automatic fuses per channel</p> <p>LSC Atom 12 DMX-512 controller</p> <p>MagicQ PC-Wing and 24" touchscreen computer</p> <p>2x Martin adventurer/discovery/voyager "flower" effect lights</p> <p>6x Martin 250 wash</p> <p>Martin atomic 3000 strobe</p> <p>Martin Magnum 1000 smoke generator</p> <p>Mirrorball, Ø50cm with 1rpm motor</p> <p>21x 120cm 40W Black light (Ultra violet) fluorescent tubes between truss A and B</p> <p>Laserworld CS-1500, Class 4, 1500mW RGB laser with ILDA uplink</p>
Stage	<p>14x 2m*1m plates, maximum 28m<sup>2</sup> stage, 72cm legs</p> <p>Option to use two plates with 25cm legs as drum riser</p> <p>Molton black fabric to cover front of stage</p>
Monitoring	<p>4x Nexo PS15R2 stage monitors</p> <p>3x RCF HC3200 amps with Nexo DTD-T-U, Touring processing, total 6ch</p> <p>4x Ashley MQX 2310 Equalizers, AUX 1-8 (AUX 8 is normally booth monitor)</p> <p>1x RCF 3000SM booth monitor</p> <p>1x Kind K12 booth monitor amp, bridged mono</p>



Signal cables	XLR	3m - 3x 6m - 6x 10m - Ca 20x
	Jack	15x assorted lengths, <b>artists are encouraged to bring their own!</b>
	Multi 1	32/8 XLR (fixed between stage and mixing position)
	Multi 2	8/4 XLR (loose stagebox, 10m cable)
	Speakon-2	10m - 5x Some short lengths for daisy-chaining monitors
	Phono (stereo)	Assorted lengths, good selection of cheap cable :)
	Mic/DI	
		2x Shure QLXD with 2x SM58 capsules
		4x Shure SM57
		4x Shure SM94
		1x Shure Beta52
		1x Shure Beta91
		4x Sennheiser e604
		3x Sennheiser e906
		5x Klark DN100 DI box
		3x Klark DN200 DI box
Stands		10x tall K&M with base plate
		9x short K&M with base plate
		7x tall K&M with tripod
		2x short K&M with tripod
		24x booms that mounts on any stand
		Good selection of mic clips (Shure, AKG, Sennheiser)
		3x guitar stands (fits most acoustic, el- and basses)
Mixers		1x Allen&Heath ML4000, 40ch/12aux/8VCA analog, redundant power
		1x Yamaha MG16/6FX, 16ch analog
		1x Denon X-1600, 4ch DJ-mixer
		1x Pioneer DJM-300-S, 2ch DJ-mixer
		1x Behringer BCD3000 USB DJ-mixer
Processors etc		2x TC M-One effects processor
		1x Lexicon MX200 effects/reverb processor
		2x Klark Teknik DN500 dual compressor/expander, 4ch
		1x Behringer quad intelligate, 4ch
		3x Behringer dual Intelligate, 6ch

CD/LP/sources	<p>2x Pioneer CDJ-900 CD-players</p> <p>2x Technics SL-1210 M3D Turntables, Ortofon Concorde DigiTrack needles</p> <p>1x Dell Precision R5400 PC:</p> <p>Hardware: Quad-Xeon 3GHz, 8GB, 1TB, USB2.0, Firewire.</p> <p>24" LCD screen onwall at mixing position + projector HDMI link</p> <p>Software: Windows 7 Professional</p> <p>Pangolin QuickShow (laser)</p> <p>Virtual-DJ and Traktor Scratch Pro (DJ)</p> <p>Microsoft Office 2007 (Word, Excel, PowerPoint)</p>
Network	<p>Gigabit wired Ethernet switch at mixing position, gigabit internet link (UniNett).</p> <p>802.11b/g WLAN (low signal at backstage)</p>
Media	<p>Optoma EP1080, native 1080p, 16:9, 3600 ansilumen projector</p> <p>HDMI+VGA connectivity by stage, HDMI only from mixing position</p> <p>4x3m motorized screen behind stage, possible to use as "live" backdrop</p> <p>Separate 5.1 surround sound system with DVD/Blu-Ray.</p>
Power	<p>63A for lights</p> <p>32A PA+monitor</p> <p>32A at stage (out of the 63A) with breakout box (1 and 3-phase)</p> <p>63A extra outlet at elevator, require 25m cable (and subdivider) to be used at stage</p> <p>16A at either side of stage</p> <p>2x 16A at mixing position</p> <p>(all automatic breakers, PA+monitor mains are disabled by fire alarm)</p> <p>Powerpads 8x</p> <p>Extensions 10x 5m and assorted lengths</p>

- Notes
- Elevator between ground- and 1st floor is usually available for equipment loading, but has some "personality". Operated by our crew only.
  - We do not have any keyboard stands, these are considered part of the backline!
  - Visiting sound engineers MUST be REASONABLY sober while operating our equipment
  - Any modifications done to FX, EQ-rack or main mixer cabling MUST be undone before load-out



Truss A: 12x PAR64  
 6x mac 250w  
 2x Blinders  
 Strobe

Truss B: 4x PAR64  
 Projector

Drawing shows 1st floor only.

Ground floor contains café area with separate bar and indoor/outdoor PA, ladies' and mens' room, main entrance with wardrobe and a small office